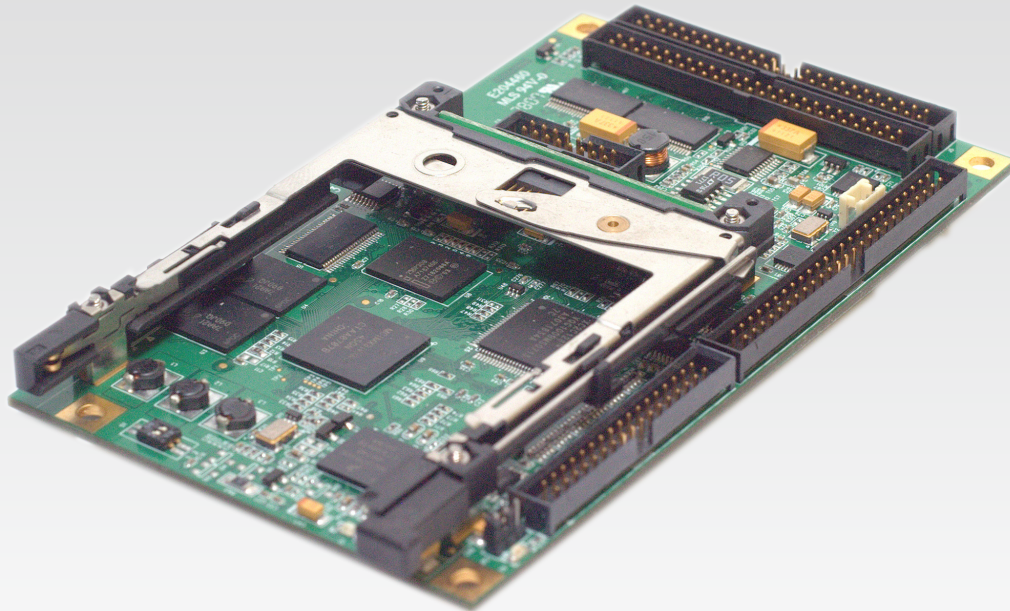


# Bitsy G5™

With Freescale™ i.MX31 RISC Processor



## FEATURES

- Vector Floating Point co-processor
- Hardware MPEG video encoder
- Low operational power
- Supports Windows® CE 6.0 R2 and Linux
- Fully RoHS compliant

**Bring together high-performance processing with low power using Eurotech Inc.'s Bitsy G5™.** Based on the Freescale™ i.MX31 RISC with Vector Floating Point co-processor, the small footprint, power efficient Bitsy G5 is the answer to your cool-running, high computation embedded requirement. The Bitsy G5 Single Board Computer is the right solution to your requirement for computational and image processing performance in a compact, power-managed, off-the-shelf platform. With floating point and video encoding functions offloaded from the core CPU, ample processing power remains for operation of other data transfer, presentation, and human interface elements of your application.

The Bitsy G5's features and performance will leapfrog your project beyond the challenges, expense and time common to new designs. Adding value to your application has never been easier with certified support for Windows® CE or Linux. With Eurotech Inc.'s Bitsy G5 you can expedite development while keeping your efforts focused on your application, and on your customers.

# Bitsy G5™

## Specifications\*

|                                       |  |
|---------------------------------------|--|
| PROCESSOR                             | 32-bit Freescale™ i.MX31 RISC<br>Up to 532 MHz CPU clock<br>133 MHz system bus clock<br>Vector Floating Point co-processor   |
| MEMORY                                | Up to 128 MB Mobile DDR SDRAM<br>Up to 64 MB NOR Flash Memory<br>PCMCIA Type II, 3.3 and 5.0 V<br>SD/MMC card port (optional)  |
| COMMUNICATIONS/INTERFACES             | USB 2.0 Host Hi-Speed 480 Mbps<br>USB function port<br>3 Serial Ports, RS-232 8-wire, 4-wire and Logic Level 2-wire<br>IrDA transceiver configurable on 2-wire interface<br>SPI port<br>I2C port<br>10/100 BASE-T Ethernet interface<br>802.3af compliant PoE port (optional)<br>External interrupt inputs |
| VIDEO, USER, AND EXPANSION INTERFACES | 3.3 or 5 volt LCD active panel<br>16-bit VGA (640x480) or 8-bit SVGA (800x600)<br>VGA MPEG-4 hardware encoder<br>Four- or five-wire analog-resistive touch panel<br>Expansion bus interface  |
| ADSmartIO                             | Configurable input/outputs:<br>- 5" x 4" keypad<br>- 9 digital I/Os<br>- 5 analog inputs + 4 digital I/Os  |
| AUDIO INTERFACE                       | AC'97, 16-bit stereo codec<br>2x1W stereo speaker output<br>Stereo microphone input  |
| OPERATING ENVIRONMENTS                | Windows® CE 6.0 and 6.0 R2<br>Linux  |
| POWER                                 | ADSmartPower partitions power use<br>6 – 15 VDC, below 1 W in operation  |
| PHYSICAL                              | Commercial temperature 0° to 70° C / Extended temperature -40° to 85° C<br>3 x 5 in (76 x 127 mm)<br>Weight 2.5 oz (71 g)  |

\*Specifications and features subject to change without notice  
See our website for latest updates and more information  
[www.eurotech-inc.com](http://www.eurotech-inc.com)

### About Us

Eurotech delivers embedded computer systems for high capability and low power applications, networking and wearable computing solutions, and application framework middleware for multimedia, industrial, transportation, medical, and wireless applications. Eurotech platforms allow OEM and enterprise customers to focus on their core revenue-generating products and services and get to market quickly.

Bitsy G5 is a trademark of Eurotech Inc.  
Other trademarks are property of their respective holders.

CMM4476F Aug2008v1.0

